



SOLO
standalone label system

The ultimate standalone label solution



What is SOLO?

SOLO is a unique standalone thermal transfer printing system allowing you to print variable labels without the need for a PC or any programming.

The solution comprises a durable thermal transfer printer, an intelligent keyboard with 1MB of onboard memory, and *SOLO Studio* - a feature-packed PC application allowing you to design your labels then transfer them to the keyboard at the click of a button!

Simple...

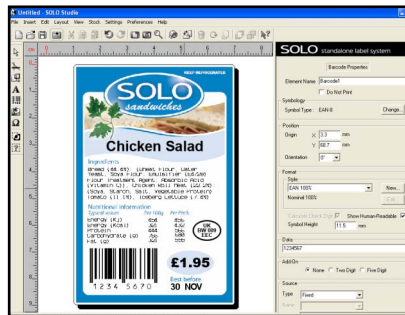
SOLO Studio lets you to design your labels using a simple, intuitive interface. Your designs can then be transferred to the *SOLO* keyboard instantly without the need for any programming.

Use *SOLO Studio*'s Keyboard Manager to organise your label templates and even manage multiple keyboards.

Powerful...

SOLO Studio offers many of the advanced features found in leading PC based labelling packages including a wide range of variable data types and database integration.

- Add barcodes, lines, boxes, images, TrueType fonts and scalable symbols to your designs
- Import image files in all major formats. *SOLO Studio* converts these into single-bit images and scales them to the printer's resolution automatically
- Add variable data elements including option lists, date/time stamps, serial numbers, keyboard entry and external device input



- Easily transfer any database to the keyboard and connect this to your label templates

- Use *SOLO*'s macro script facility to add advanced dynamic features to your labels such as EAN128 barcodes, SSCC labels, custom check digits, calculations and conditional statements

Quick...

Because *SOLO Studio* has been designed specifically for the *SOLO* product range, it delivers unrivalled speed for on-demand labelling.

Cost effective...

The *SOLO* solution offers a highly cost effective alternative to PC labelling packages or outsourcing. Printing labels from the *SOLO* keyboard is so simple, staff can be trained in a matter of minutes.

Available in both a compact *Desktop* model and the faster, robust *Industrial* model, *SOLO* is the ideal solution for retail shelf-edge labelling, shipping and warehousing, pharmaceuticals and any other business requiring labels on-site and on-demand. Even add an optional battery pack for total mobility!

10 reasons to 'go SOLO'...

- ❏ Print variable labels without a PC or any programming
- ❏ Powerful variable data features and database integration
- ❏ Minimal maintenance, training and support
- ❏ Durable construction suitable for industrial environments
- ❏ Lightning-fast printing
- ❏ Simple, powerful interface
- ❏ TrueType fonts and scalable symbol library
- ❏ Compatible with standard, off-the-shelf consumables
- ❏ Desktop and Industrial models available in both 200 and 300 dpi versions
- ❏ Range of accessories available including optional battery pack for total mobility

Technical specifications overleaf

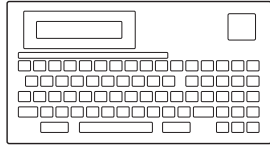
www.sololabel.com



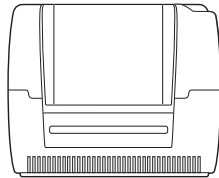
SOLO
standalone label system

Technical Specifications

SOLO Desktop edition



SOLO Keyboard



SOLO TTP245 Printer

SOLO Keyboard specifications

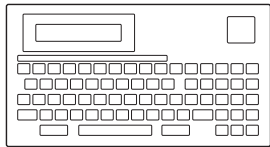
Dimensions	261mm W x 142mm D x 31mm H
Power	5V, 250mA
Memory	1MB Flash + 128SRAM application memory; 512KB Flash + 128SRAM system memory
Interface	RS232 (Max. baud rate 19,200bps)
Keyboard	68 keys; Large keyboard layout
Display	20 characters x 2 lines
Agency Approval	CE; EMC; FCC Class A

SOLO TTP245 Printer specifications

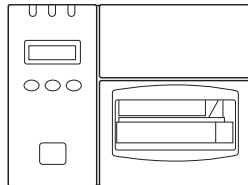
Dimensions	210mm W x 310mm D x 180mm H
Power	100V - 250V universal switching power supply
Printing method	Direct thermal/thermal transfer
Resolution	203dpi (8dots/mm)*
Max. print width	108mm
Max. print length	39.6" (990mm)
Printing speed	2 - 5 inches per second
Case	Double-walled plastic
Operation panel	Push switch; 2-colour LED indicator
Sensors	Label gap; head open; black mark
Memory	Flash ROM (1MB); DRAM (2MB)
Interface	RS232 (Max. baud rate 19,200bps)
Media type	Label (continuous; die-cut; fan-fold)
Media dimensions	Width: 19mm-116mm (0.76" - 4.6") Length: 6mm-990mm (0.2" - 39.6") Thickness: 0.06mm - 0.25mm
Agency Approval	CE; FCC Class A; UL; CUL; TUV

*300dpi version also available. Contact your dealer for information

SOLO Industrial edition



SOLO Keyboard



SOLO TTP246 Printer

SOLO Keyboard specifications

Dimensions	261mm W x 142mm D x 31mm H
Power	5V, 250mA
Memory	1MB Flash + 128SRAM application memory; 512KB Flash + 128SRAM system memory
Interface	RS232 (Max. baud rate 19,200bps)
Keyboard	68 keys; Large keyboard layout
Display	20 characters x 2 lines
Agency Approval	CE; EMC; FCC Class A

SOLO TTP246 Printer specifications

Dimensions	301mm W x 420mm D x 241mm H
Power	100V - 250V universal switching power supply
Printing method	Direct thermal/thermal transfer
Resolution	203dpi (8dots/mm)*
Max. print width	108mm
Max. print length	39.6" (990mm)
Printing speed	2 - 6 inches per second
Case	Metal construction with view window
Display	LCD (122 x 32 pixel)
Sensors	Label gap; paper end; ribbon near end; black mark; case open, peel off
Memory	Flash ROM (1MB); DRAM (2MB)
Interface	RS232 (Max. baud rate 19,200bps)
Media type	Label (continuous; die-cut; fan-fold)
Media dimensions	Width: 25.4mm-116mm (1.0" - 4.6") Length: 6mm-999mm (0.2" - 39.9") Thickness: 0.06mm - 0.25mm
Agency Approval	CE; FCC Class A; UL; CUL; TUV

*300dpi version also available. Contact your dealer for information

SOLO Studio software

Minimum system requirements: Windows 95/98/ME/NT4/2000/XP; COM port

SOLO Desktop edition

- SOLO TTP245 printer
- SOLO keyboard
- SOLO Studio software

SOLO Industrial edition

- SOLO TTP246 printer
- SOLO keyboard
- SOLO Studio software

Contact your dealer for information and prices.

Optional extras

- Battery pack
- Label cutter
- External roll holder
- Barcode scanner
- Self-peel

